

SB810HF

Ultra-Low Pressure Type of Polyamide Reverse Osmosis Membrane Element

■ **Application**

- Groundwater, tap water treatment etc.
- Liquid concentration, sewage wastewater and reclaimed water recycle etc.
- Dairy and beverage production, water vending machine, water purify equipment in medical lab, drinking equipment in office or residential site etc.
- Feed TDS below 2,000 mg/L

■ **Specification**

| | | |
|--------------------------------|--|--------|
| Membrane Surface Area(Nominal) | 40.9 m ² (440 ft ²) | |
| Feed spacer thickness | 28 mil | |
| Permeate flow | 47.3 m ³ /d (12,500 GPD) | *1, *2 |
| Nominal Salt Rejection | 99.5% | *1 |
| Minimum Salt Rejection | 99.4% | *1 |

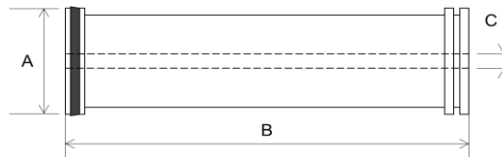
(*1) Test condition : Feed Pressure 1.03 MPa (150 psi), Temperature 25 deg. C, Feed water concentration 1,500 mg/L as NaCl, Recovery ratio 15%, Feed water pH 7.5 - 8.0
 (*2) Individual permeate flow rate may vary +/- 15%

■ **Operating limits**

| | |
|--------------------------------------|-----------------------|
| Maximum Pressure | 4.14 MPa (600 psi) |
| Maximum Temperature | 45 °C |
| Maximum Feed water SDI ₁₅ | 5 |
| Maximum Feed water flow | 17 m ³ /hr |
| pH range during operation | 3 - 10 |
| Free chlorine of feed water | Not detectable |
| Maximum element pressure drop | 0.1 MPa (15 psi) |

■ **Element Dimension**

| | | |
|---|------------------------|----------------------|
| A | Outer diameter | 200 mm (7.9 inch) |
| B | Length | 1,016 mm (40 inch) |
| C | Diameter of inner tube | 28.6 mm (1.125 inch) |



All the information is understood to be subject to change without prior announcement. For more detail, refer to the manual and/or contact us.

TOYOBO CO., LTD.
Desalination Membrane Department
Phone: +81-6-6348-3360
E-mail: RO@toyobo.jp

Arabian Japanese Membrane Company, LLC
(Kingdom of Saudi Arabia)
Phone: +966-11-462-9545
E-mail: ajmc_sales@ajmc.com.sa