

## **SB815HF**

Standard Low-Pressure Type of Polyamide Reverse Osmosis Membrane Element

### ■ Application

- Brackish water, groundwater, surface water, tap water treatment etc.
- Liquid concentration, sewage wastewater and reclaimed water recycle etc.
- Production water supply system for electronics, power, steel & iron, pharmacy, thermoelectric, petrochemical, coal to chemicals etc.
- Feed TDS below 5,000 mg/L

### ■ Specification

Membrane Surface Area(Nominal)	40.9 m <sup>2</sup> (440 ft <sup>2</sup> )	
Feed spacer thickness	28 mil	
Permeate flow	49.2 m <sup>3</sup> /d (13,000 GPD)	*1, *2
Nominal Salt Rejection	99.5%	*1
Minimum Salt Rejection	99.4%	*1

(\*1) Test condition : Feed Pressure 1.55 MPa (225 psi), Temperature 25 deg. C, Feed water concentration 2,000 mg/L as NaCl, Recovery ratio 15%, Feed water pH 7.5 - 8.0

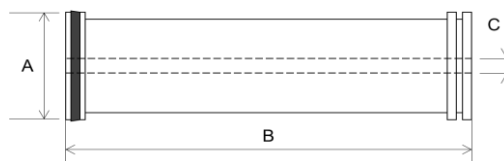
(\*2) Individual permeate flow rate may vary +/- 15%

### ■ Operating limits

Maximum Pressure	4.14 MPa (600 psi)
Maximum Temperature	45 °C
Maximum Feed water SDI <sub>15</sub>	5
Maximum Feed water flow	17 m <sup>3</sup> /hr
pH range during operation	3 - 10
Free chlorine of feed water	Not detectable
Maximum element pressure drop	0.1 MPa (15 psi)

### ■ Element Dimension

A	Outer diameter	200 mm (7.9 inch)
B	Length	1,016 mm (40 inch)
C	Diameter of inner tube	28.6 mm (1.125 inch)



All the information is understood to be subject to change without prior announcement. For more detail, refer to the manual and/or contact us.

#### TOYOBO CO., LTD.

Desalination Membrane Department  
Phone: +81-6-6348-3360  
E-mail: RO@toyobo.jp

#### Arabian Japanese Membrane Company, LLC

(Kingdom of Saudi Arabia)  
Phone: +966-11-462-9545  
E-mail: ajmc\_sales@ajmc.com.sa