

SL815HF-2

Fouling Resistance Type of Polyamide Reverse Osmosis Membrane Element

■ Application

- Production wastewater treatment, reclaimed water recycle, sewage wastewater treatment etc.
- Industrial applications for power, steel, electroplating, petrochemical, coal to chemicals, textile and dyeing, pulp&Papermaking, landfill leachate etc.
- Feed TDS below 8,000 mg/L

■ Specification

Membrane Surface Area(Nominal)	37.2 m ² (400 ft ²)	
Feed spacer thickness	34 mil	
Permeate flow	43.5 m ³ /d (11,500 GPD)	*1, *2
Nominal Salt Rejection	99.75%	*1
Minimum Salt Rejection	99.65%	*1

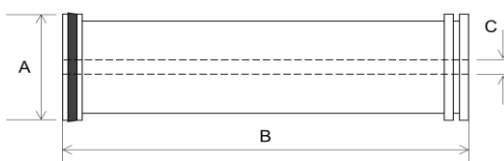
(*1) Test condition : Feed Pressure 1.55 MPa (225 psi), Temperature 25 deg. C, Feed water concentration 2,000 mg/L as NaCl, Recovery ratio 15%, Feed water pH 7.5 - 8.0
(*2) Individual permeate flow rate may vary +/- 15%

■ Operating limits

Maximum Pressure	4.14 MPa (600 psi)
Maximum Temperature	45 °C
Maximum Feed water SDI ₁₅	5
Maximum Feed water flow	17 m ³ /hr
pH range during operation	3 - 10
Free chlorine of feed water	Not detectable
Maximum element pressure drop	0.1 MPa (15 psi)

■ Element Dimension

A	Outer diameter	200 mm (7.9 inch)
B	Length	1,016 mm (40 inch)
C	Diameter of inner tube	28.6 mm (1.125 inch)



All the information is understood to be subject to change without prior announcement.
For more detail, refer to the manual and/or contact us.

TOYOBO CO., LTD.

Desalination Membrane Department
Phone: +81-6-6348-3360
E-mail: RO@toyobo.jp

Arabian Japanese Membrane Company, LLC

(Kingdom of Saudi Arabia)
Phone: +966-11-462-9545
E-mail: ajmc_sales@ajmc.com.sa